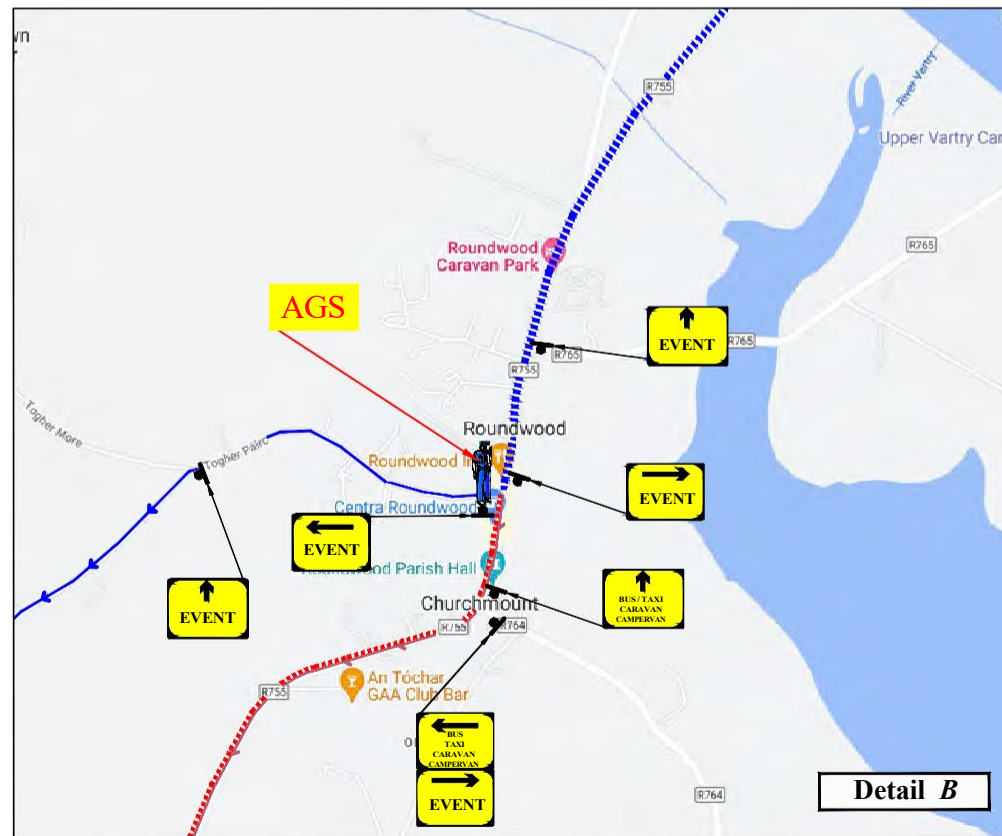
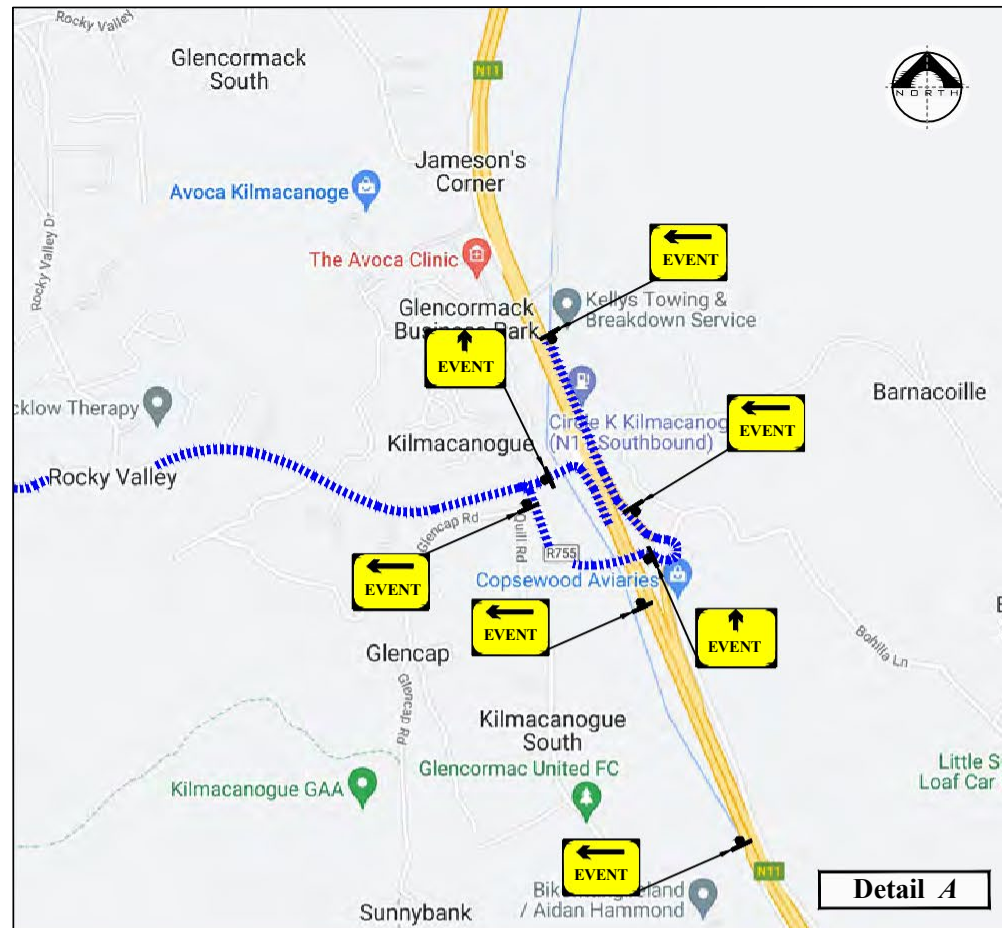
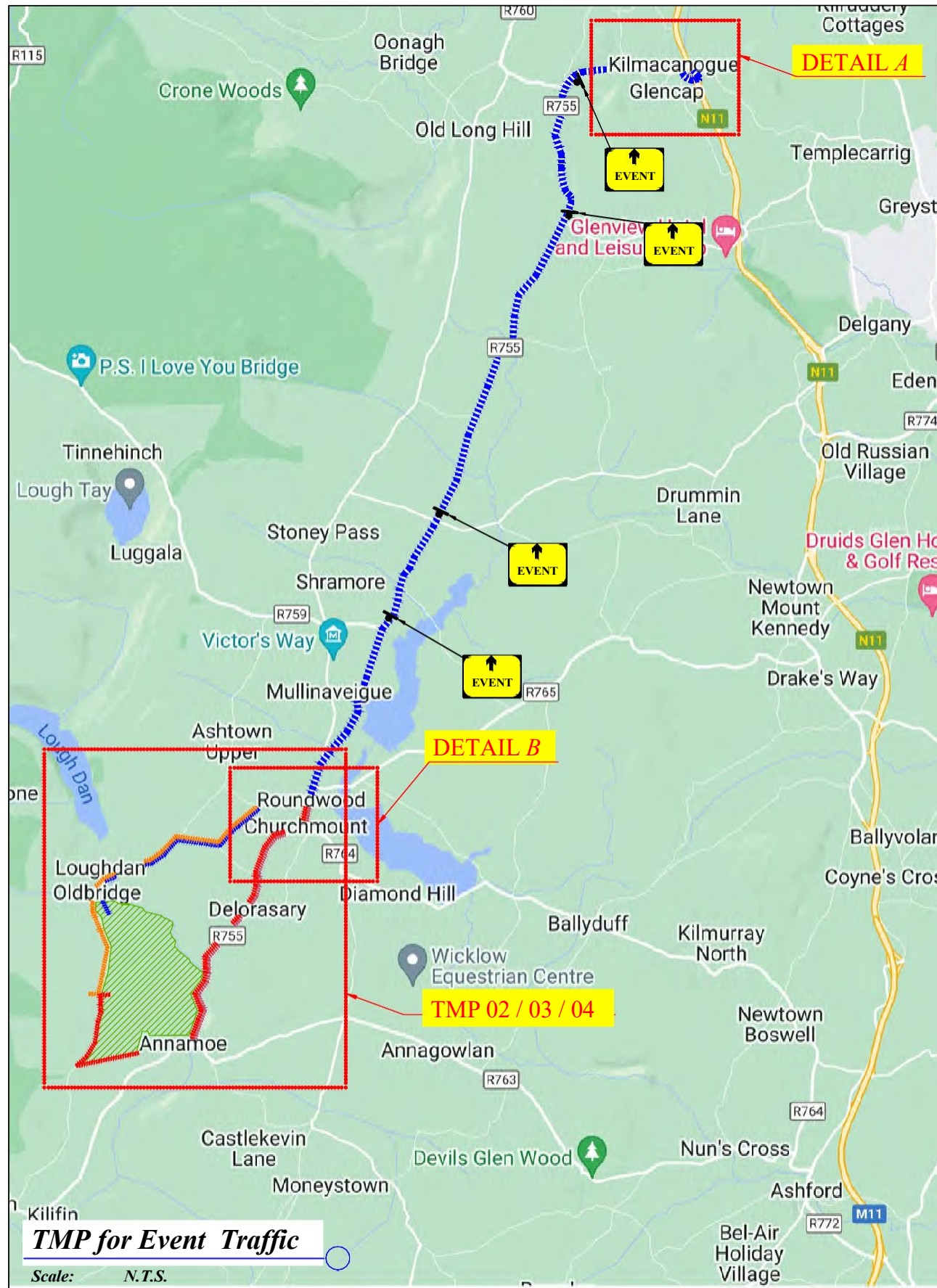


**Proposed Traffic Management Plan  
For  
Beyond The Pale Festival  
At  
Glendalough House  
Annamoe  
Wicklow  
On  
21<sup>st</sup>, 22<sup>nd</sup>, 23<sup>rd</sup> June 2024**





**LEGEND**

- Sign Location
- General Event Traffic
- Bus Route
- Artists / Staff / Production Route
- Emergency Route
- General Parking to Roundwood Detour
- Event Area
- Traffic Cones
- AGS - An Garda Síochána
- TMO - Traffic Management Operative

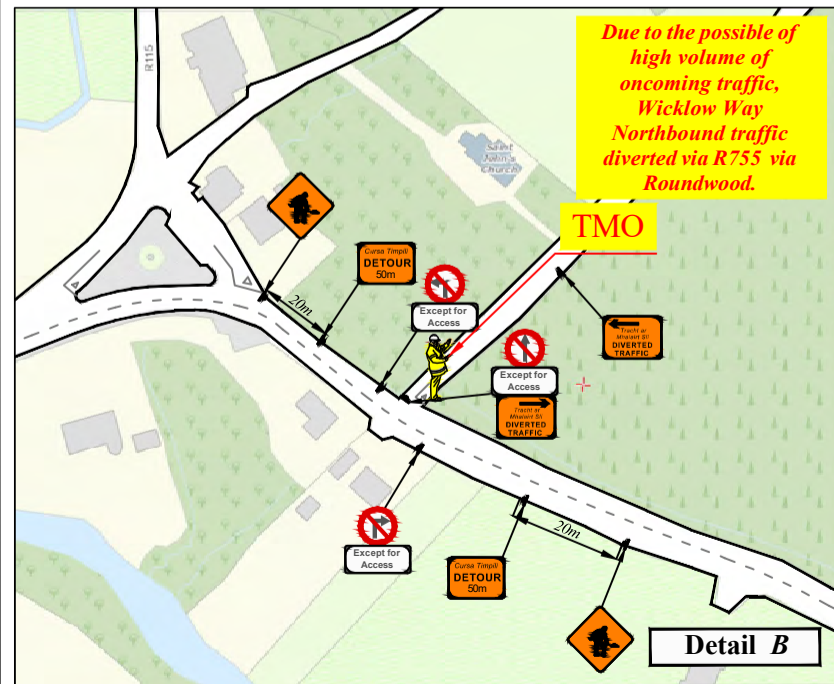
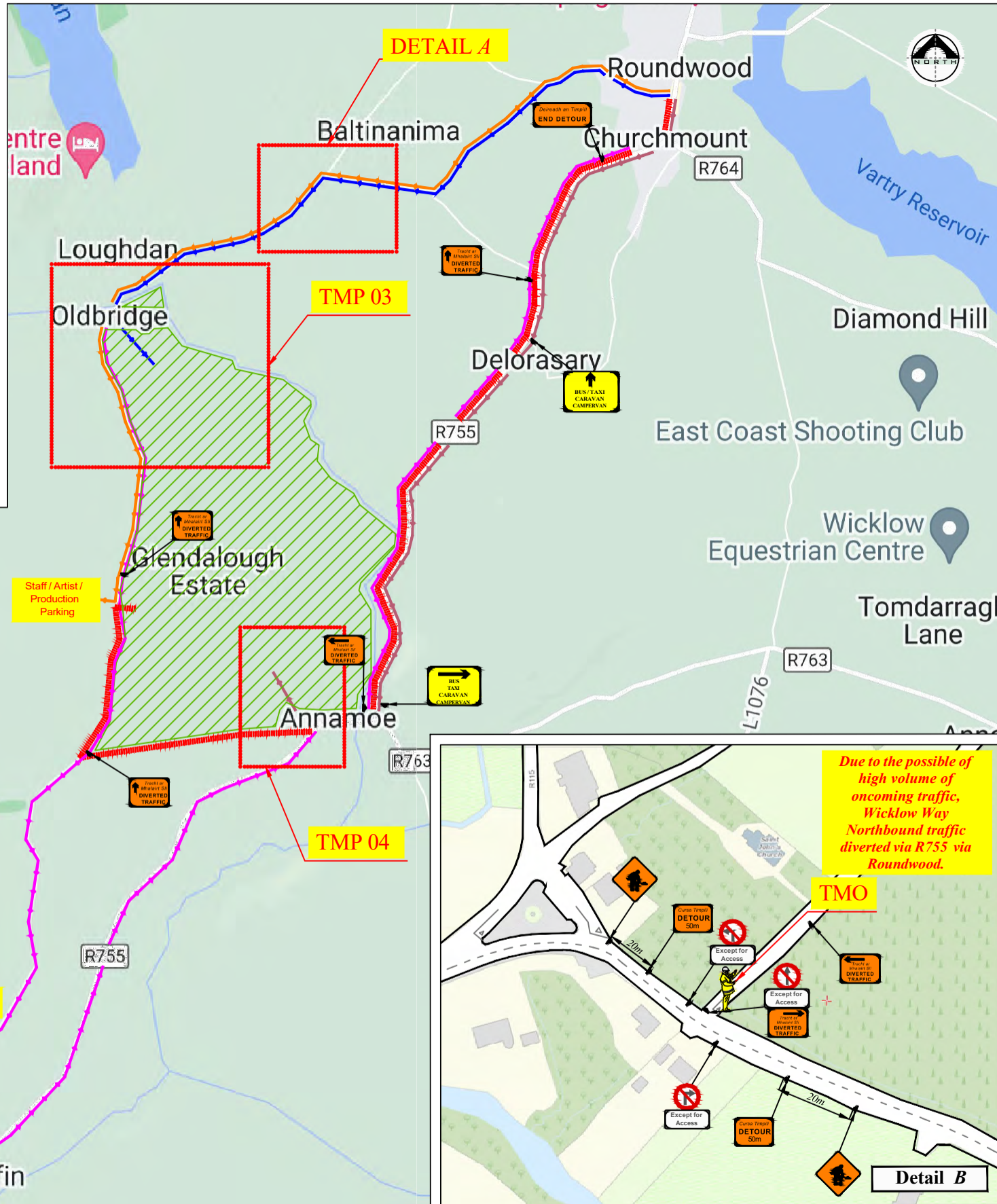
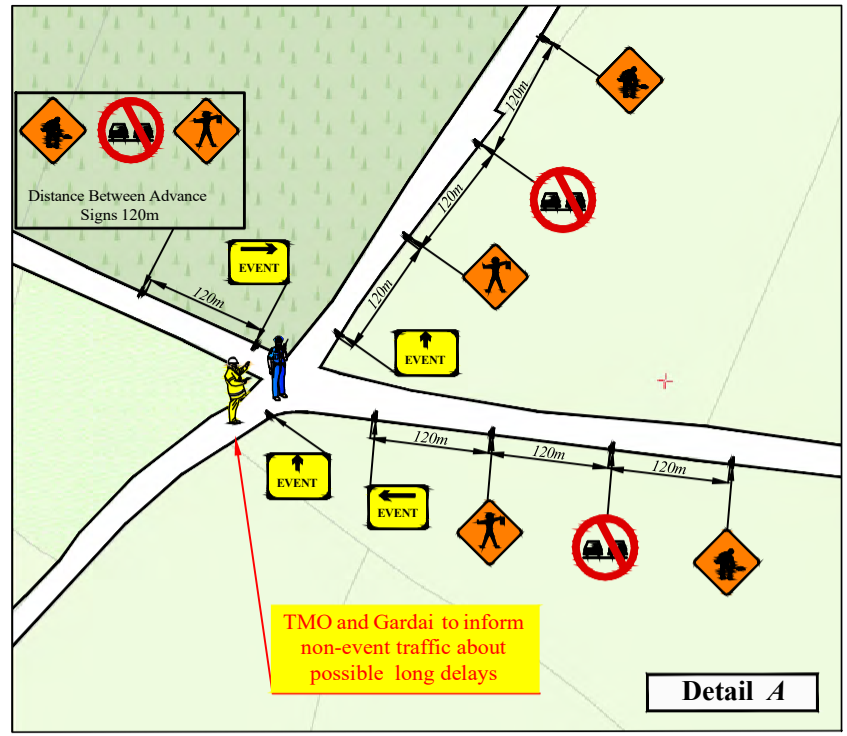
Works TTM type:	Static Type A				
	Design Type A: >12h				
Design Parameters:	LV-1 (I)	LV-1 (III)	LV-1 (IV)	LV-2 (I)	LV-2 (II)
1. Minimum Sign Size mm	450	600	600	600	750
2. Statutory Speed of the Road	30km/h	50	60	80	100
3. Distance between Advance Signs	10m	20m	20m	120m	200m
4. Number of Advance Signs	1 (-120) 2 (-120)	2	3 (-120) 2 (-120)	3 (-120) 4 (-120)	3 (-120) 4 (-120)
5. Minimum Visibility of Signs	25m	50m	60m	90m	120m
6. Longitudinal Safety Zone	0.5m	5m	15m	45m	60m
7. Lateral Safety Zone	0.5m	0.5m	0.5m	1.2m	1.2m
8. Leading Taper	1in1m	1in5m	1in10m	1in40	1in40
9. Maximum at Tapers Cone Space	1m	3m	3m	3m	3m
10. Maximum Longitudinal Cone Space	3m	3m	6m	12m	12m
11. Lane Width (m)	2.5m	3 (2.5)	3 (2.5)	3 m	3 m
12. Two-way Roadway width (m)	5m	5m	5m	-	-

- Note:**
- All signs to comply with Chapter 8 of the "Traffic Signs Manual"-Guidance Document-2019.
  - All Traffic Management to be carried out in accordance with Chapter 8 of the "Traffic Signs Manual".
  - Detailed Risk Assessment to be carried out prior to the installation of Traffic Management System.
  - Exact sign positions to be agreed on site.
  - All affected Parties and An Garda Síochána to be notified prior to works commencing.
  - Signs to be positioned so as not to cause an obstruction to other road users.
  - All signs to be faced with retro-reflective material to class ref 2 of EN 12899.
  - "End of Roadworks" sign placed 20m to 50m from end of works area.
  - Emergency routes will be maintained.



Rev:	Description:	Date:	Job Details:	Drawing:	Dwg no:
			Proposed Traffic Management Plan for Beyond The Pale Festival, at Glendalough Estate, Wicklow on 21th - 23th June 2024	TMP for Event Traffic	01
			Sheet:	Drawn By:	Rev:
			CAD File ref.:	DM	
				Date:	Scale:
				February 2024	As Shown



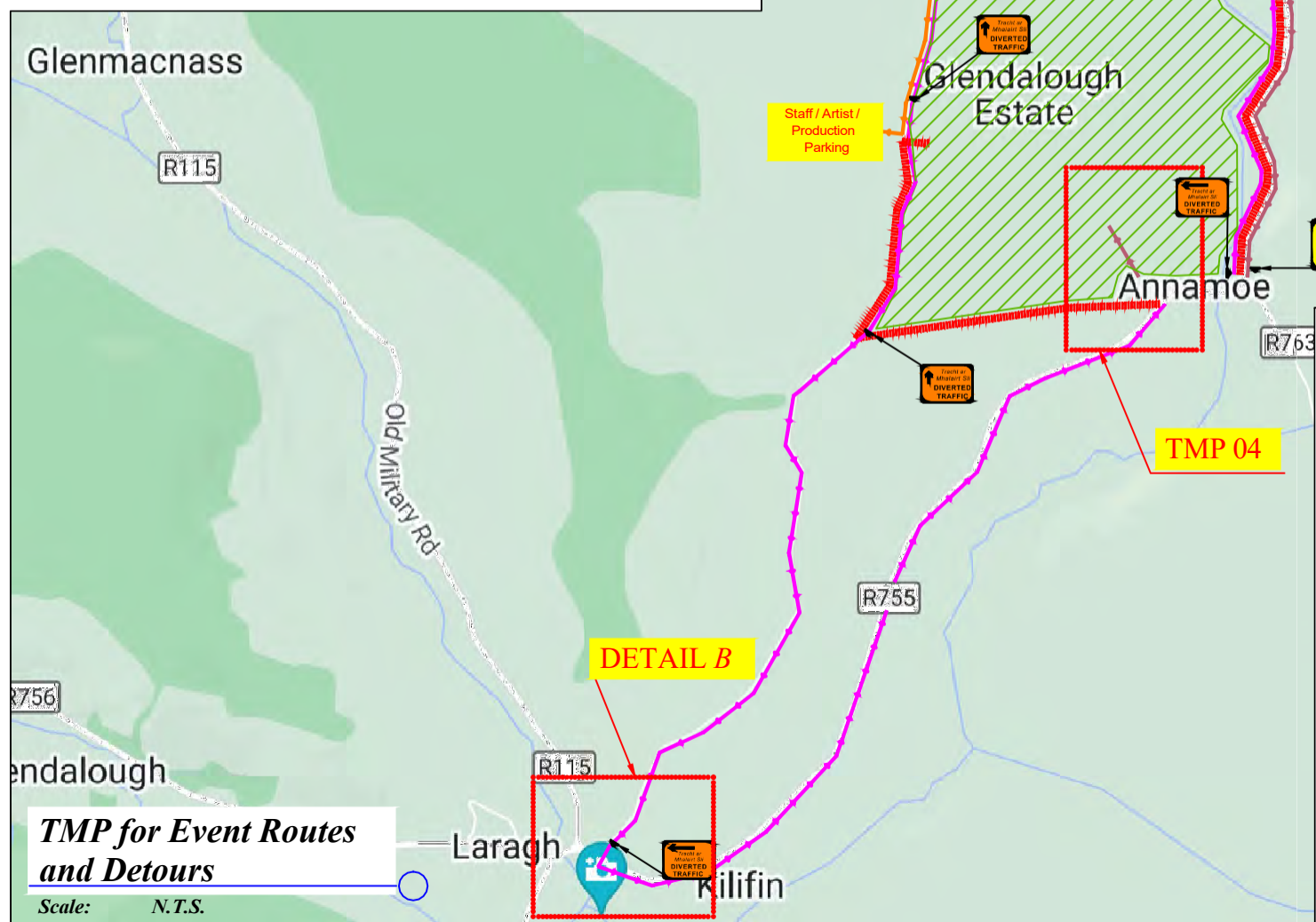


**LEGEND**

- Sign Location
- General Event Traffic
- Bus Route
- Artists / Staff / Production Route
- Emergency Route
- General Parking to Roundwood Detour
- Event Area
- Traffic Cones
- AGS - An Garda Síochána
- TMO - Traffic Management Operative

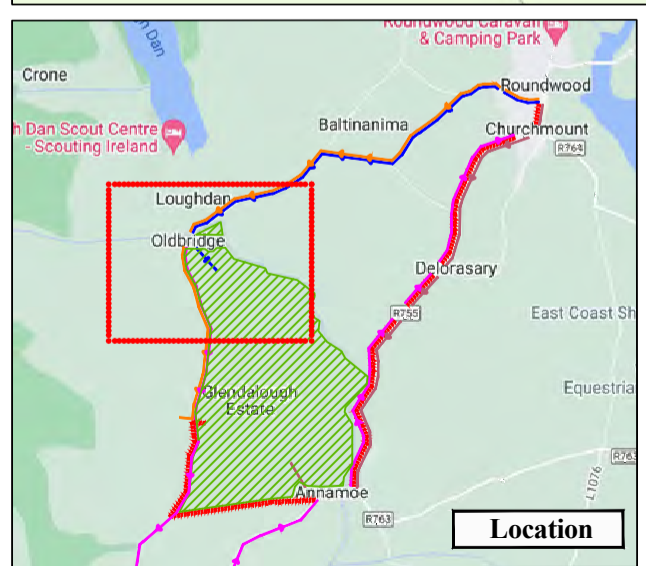
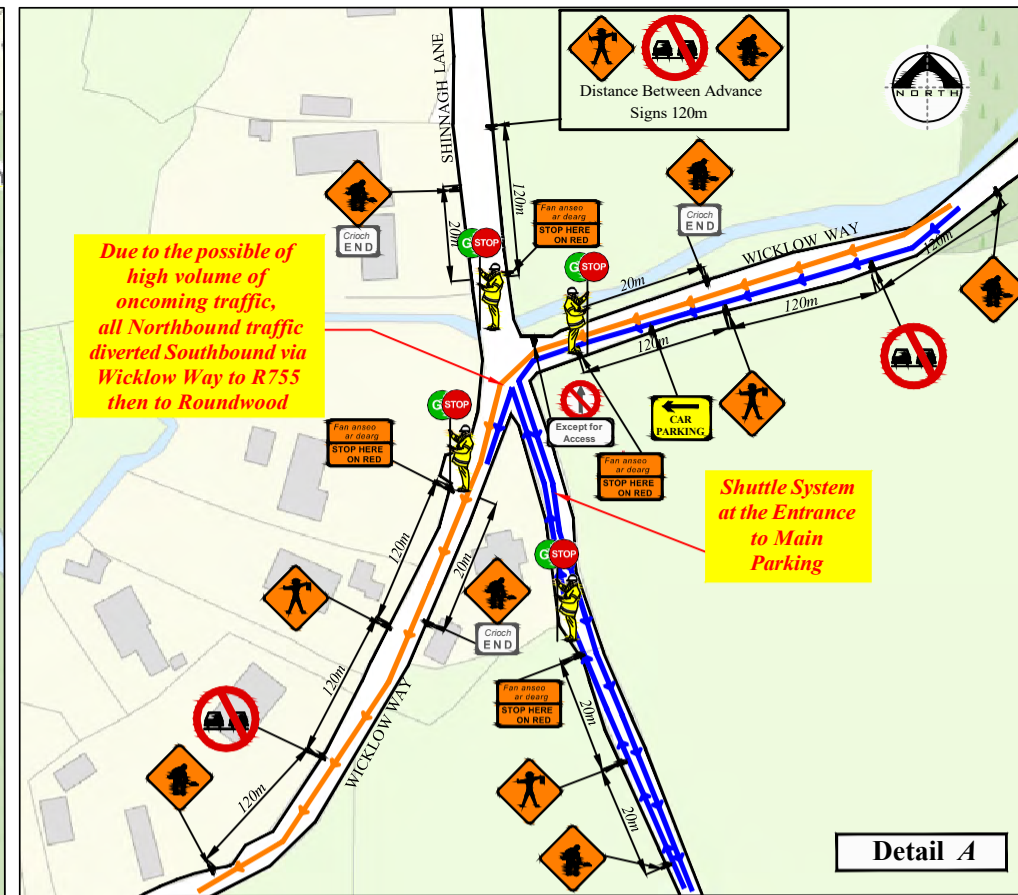
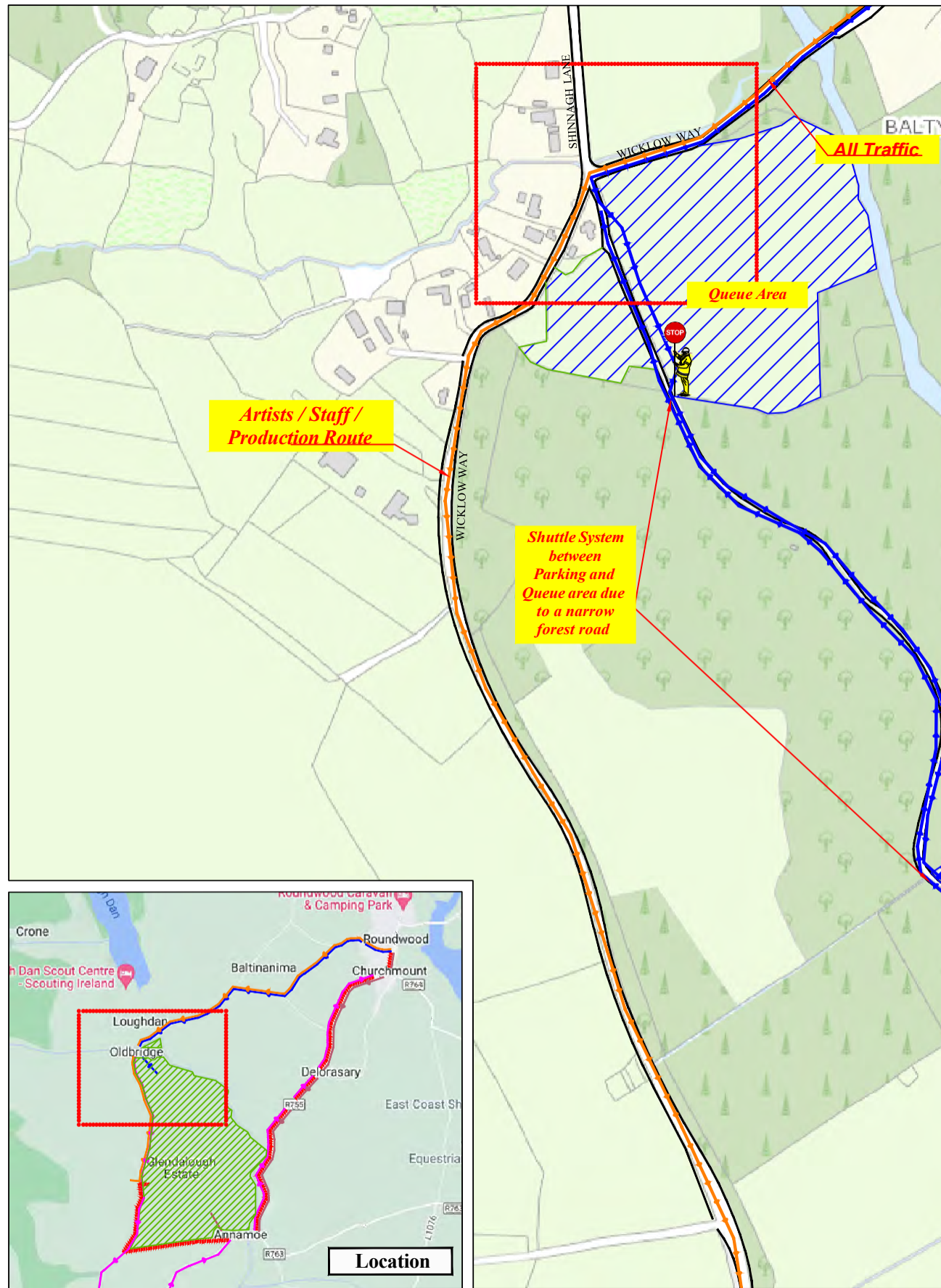
Works TTM type:	Static Type A				
	Design Type A: >12h				
Design Parameters:	LV-1 (I)	LV-1 (III)	LV-1 (IV)	LV-2 (I)	LV-2 (II)
1. Minimum Sign Size mm	450	600	600	600	750
2. Statutory Speed of the Road	30km/h	50	60	80	100
3. Distance between Advance Signs	10m	20m	20m	120m	200m
4. Number of Advance Signs	1 (<120) 2 (>120)	2	3 (<120) 2 (>120)	3 (<120) 4 (>120)	3 (<120) 4 (>120)
5. Minimum Visibility of Signs	25m	50m	60m	90m	120m
6. Longitudinal Safety Zone	0.5m	5m	15m	45m	60m
7. Lateral Safety Zone	0.5m	0.5m	0.5m	1.2m	1.2m
8. Leading Taper	1in1m	1in5m	1in10m	1in40	1in40
9. Maximum at Tapers Cone Space	1m	3m	3m	3m	3m
10. Maximum Longitudinal Cone Space	3m	3m	6m	12m	12m
11. Lane Width (m)	2.5m	3 (2.5)	3 (2.5)	3 m	3 m
12. Two-way Roadway width (m)	5m	5m	5m	-	-

- Note:**
- All signs to comply with Chapter 8 of the "Traffic Signs Manual"-Guidance Document-2019.
  - All Traffic Management to be carried out in accordance with Chapter 8 of the "Traffic Signs Manual".
  - Detailed Risk Assessment to be carried out prior to the installation of Traffic Management System.
  - Exact sign positions to be agreed on site.
  - All affected Parties and An Garda Síochána to be notified prior to works commencing.
  - Signs to be positioned so as not to cause an obstruction to other road users.
  - All signs to be faced with retro-reflective material to class ref 2 of EN 12899.
  - "End of Roadworks" sign placed 20m to 50m from end of works area.
  - Emergency routes will be maintained.



Rev:	Description:	Date:	Job Details:	Drawing:	Dwg no:
			Proposed Traffic Management Plan for Beyond The Pale Festival, at Glendalough Estate, Wicklow on 21th – 23rd June 2024	TMP for Event Routes and Detours	02
			Sheet:	Drawn By:	Rev:
			CAD File ref.:	DM	
				Date:	Scale:
				February 2024	As Shown





**LEGEND**

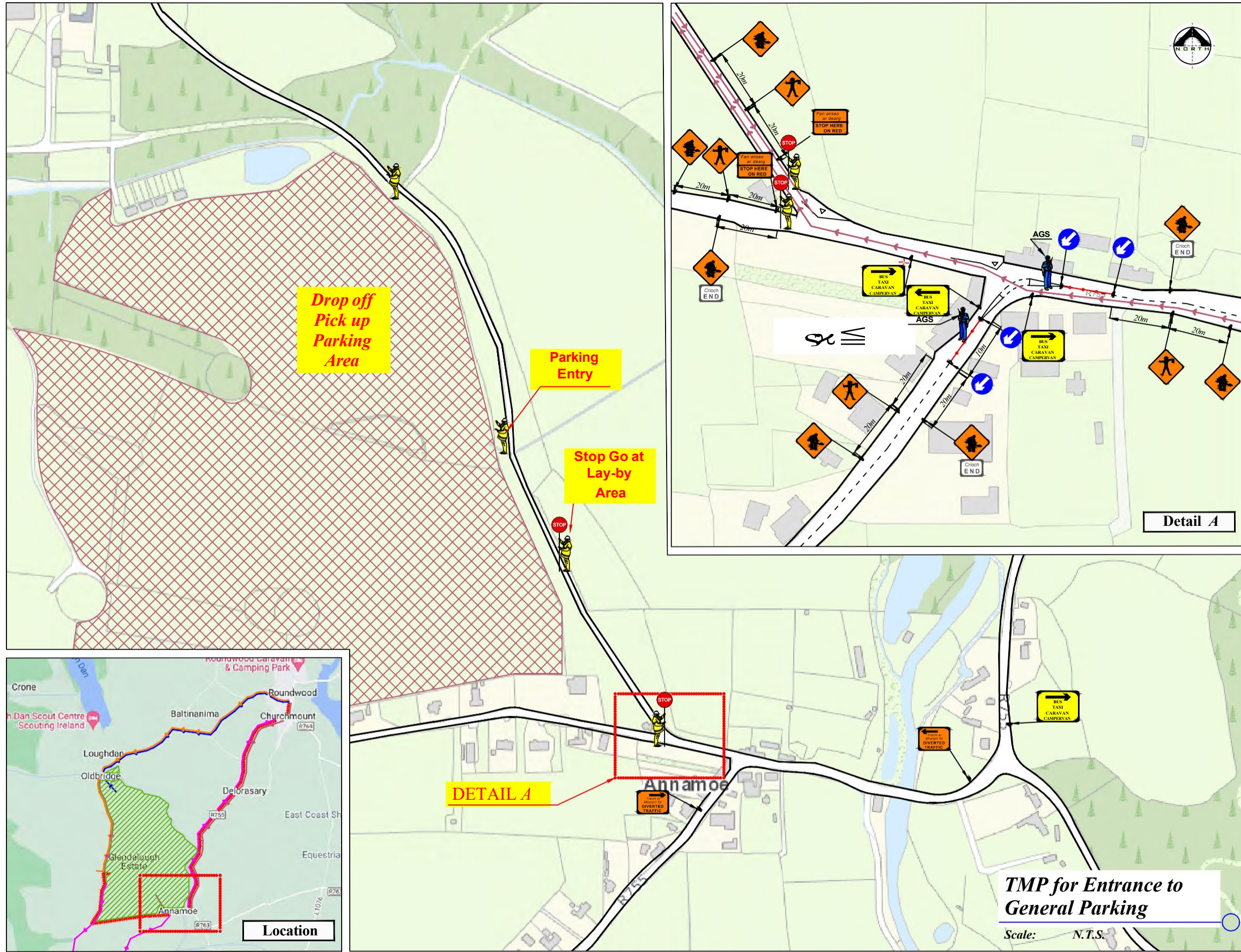
- Sign Location
- General Event Traffic
- Bus Route
- Artists / Staff / Production Route
- Emergency Route
- General Parking to Roundwood Detour
- Event Area
- Traffic Cones
- AGS - An Garda Síochána
- TMO - Traffic Management Operative
- Queue Area
- General Parking Area

Works TTM type:	Static Type A				
	Design Type A: >12h				
Design Parameters:	LV-1 (I)	LV-1 (III)	LV-1 (IV)	LV-2 (I)	LV-2 (II)
1. Minimum Sign Size mm	450	600	600	600	750
2. Statutory Speed of the Road	30km/h	50	60	80	100
3. Distance between Advance Signs	10m	20m	20m	120m	200m
4. Number of Advance Signs	1 (<120) 2 (>120)	2	3 (<120) 2 (>120)	3 (<120) 4 (>120)	3 (<120) 4 (>120)
5. Minimum Visibility of Signs	25m	50m	60m	90m	120m
6. Longitudinal Safety Zone	0.5m	5m	15m	45m	60m
7. Lateral Safety Zone	0.5m	0.5m	0.5m	1.2m	1.2m
8. Leading Taper	1in1m	1in5m	1in10m	1in40	1in100
9. Maximum at Tapers Cone Space	1m	3m	3m	3m	3m
10. Maximum Longitudinal Cone Space	3m	3m	6m	12m	12m
11. Lane Width (m)	2.5m	3 (2.5)	3 (2.5)	3 m	3 m
12. Two-way Roadway width (m)	5m	5m	5m	-	-

- Note:**
- All signs to comply with Chapter 8 of the "Traffic Signs Manual"-Guidance Document-2019.
  - All Traffic Management to be carried out in accordance with Chapter 8 of the "Traffic Signs Manual".
  - Detailed Risk Assessment to be carried out prior to the installation of Traffic Management System.
  - Exact sign positions to be agreed on site.
  - All affected Parties and An Garda Síochána to be notified prior to works commencing.
  - Signs to be positioned so as not to cause an obstruction to other road users.
  - All signs to be faced with retro-reflective material to class ref 2 of EN 12899.
  - "End of Roadworks" sign placed 20m to 50m from end of works area.
  - Emergency routes will be maintained.

	Rev:	Description:	Date:	Job Details:	Drawing:	Dwg no:
				Proposed Traffic Management Plan for Beyond The Pale Festival, at Glendalough Estate, Wicklow on 21st –23rd June 2024	TMP for Entrance to General Parking	03
				Sheet:	Drawn By:	Rev:
				CAD File ref.:	DM	
					Date:	Scale:
					February 2024	As Shown





**LEGEND**

- Sign Location
- General Event Traffic
- Bus Route
- Artists / Staff / Production Route
- Emergency Route
- General Parking to Roundwood Detour
- Event Area
- Traffic Cones
- AGS - An Garda Síochána
- TMO - Traffic Management Operative
- Drop Off / Pick up / Parking Area

Works TTM type:	Static Type A				
	Design Type A: >12h				
Design Parameters:	LV-1 (I)	LV-1 (III)	LV-1 (IV)	LV-2 (I)	LV-2 (II)
1. Minimum Sign Size mm	450	600	600	600	750
2. Statutory Speed of the Road	30km/h	50	60	80	100
3. Distance between Advance Signs	10m	20m	20m	120m	200m
4. Number of Advance Signs	1 (<120) 2 (>120)	2	3 (<120) 2 (>120)	3 (<120) 4 (>120)	3 (<120) 4 (>120)
5. Minimum Visibility of Signs	25m	50m	60m	90m	120m
6. Longitudinal Safety Zone	0.5m	5m	15m	45m	60m
7. Lateral Safety Zone	0.5m	0.5m	0.5m	1.2m	1.2m
8. Leading Taper	1in1m	1in5m	1in10m	1in40	
9. Maximum at Tapers Cone Space	1m	3m	3m	3m	3m
10. Maximum Longitudinal Cone Space	3m	3m	6m	12m	12m
11. Lane Width (m)	2.5m	3 (2.5)	3 (2.5)	3 m	3 m
12. Two-way Roadway width (m)	5m	5m	5m	-	-

- Note:**
- All signs to comply with Chapter 8 of the "Traffic Signs Manual"-Guidance Document-2019.
  - All Traffic Management to be carried out in accordance with Chapter 8 of the "Traffic Signs Manual".
  - Detailed Risk Assessment to be carried out prior to the installation of Traffic Management System.
  - Exact sign positions to be agreed on site.
  - All affected Parties and An Garda Síochána to be notified prior to works commencing.
  - Signs to be positioned so as not to cause an obstruction to other road users.
  - All signs to be faced with retro-reflective material to class ref 2 of EN 12899.
  - "End of Roadworks" sign placed 20m to 50m from end of works area.
  - Emergency routes will be maintained.
  - All departing vehicles to be held.
  - FFTM notify AGS on road when sufficient amount of vehicles ready to depart.
  - AGS resume ingress of vehicles from road.
  - A Garda Síochána will manager traffic on the public roads.
  - TMO will manage traffic on the Estate roads.



Rev:	Description:	Date:	Job Details:	Drawing:	Dwg no:
			Proposed Traffic Management Plan for Beyond The Pale Festival, at Glendalough Estate, Wicklow on 21st – 23rd June 2024	TMP for Entrance to General Parking	04
			Sheet:	Drawn By:	Rev:
			CAD File ref.:	DM	
				Date:	Scale:
				February 2024	As Shown



## **DETILS OF TRAFFIC MANAGEMENT**

### **Contact person for Wicklow County Council and An Garda Siochana**

The contact person on site will hold the Signing Lighting and Guarding license as does his deputy.

**Exiting traffic at the end of the event** will be managed in accordance with the Traffic Management Plan in consultation with AGS and Event Control. And will consist of traffic leaving on the same routes as it arrived. All traffic management measures outlined in the traffic management plan will be adhered to on the exiting as well as the entrancing.

### **Commissioning and decommissioning of the event**

Both the commissioning and decommissioning of the event are managed by a very precise schedule of arrivals, deliveries, pick ups and departures. All suppliers are required to adhere to this schedule. All site traffic will use the main Glendalough entrance at Annamoe. All site traffic is checked by security just inside the entrance and required to report to the site manager. Both the commissioning and decommissioning are scheduled so as not to overcrowd any one days with excess traffic

### **Oldbridge entrance**

There is no shuttle at this entrance, not at any entrance.

Traffic will be monitored at all times by An Garda Siochana in conjunction with Traffic management company.

### **Annamoe Entrance**

Traffic turning off the R755 to enter at this entrance will be managed by An Garda Siochana. There is far less traffic coming through this entrance this year and the traffic did not impede the flow of traffic in 2022. There is no stop/go procedure here

### **Gate 4 Entrance**

An extra entrance will be provided as a backup access route to Car Park 2. This will be access from both the Oldbridge and Annamoe entrance routes as required during the festival get in. This gate will not be used on the vehicle exiting unless weather permitting.

### **Stop/Go procedure**

The only stop/go procedure in the traffic management plan is on the internal road inside the main Glendalough entrance to ensure that buses can flow in both directions. This will be managed by Traffic management Company.

### **Signage**

VMS signs are being used to direct attendees at major junctions. These are being placed in positions agreed by An Garda Siochana. All signage shall be in accordance with Chapter 8 of the Traffic Signs Manual. No signage shall be affixed to the front or the back or any existing signs

All signage shall be removed within a week of the event finishing

### **Lighting**

Lighting shall be positioned to minimise glare or light pollution on the adjoining public road network

### **Resources being provided by Traffic Management Company:**

- There will be a total of 20 staff onsite per day. 2 supervisors, 14 operatives on the roadways and 4 internally on the site.
- Breakdown of external operatives as follows.



1 operative in Laragh, 2 operatives at the Annamoe gate, 3 in Roundwood, 8 on the approach road from Lough Dan on the approach road to the Festival.

- Training record can be provided if requested.

**Measures to ensure that proposed levels of safety on the N11 national primary road, are safeguarded, in accordance with the provisions of official policy:**

All measures have been agreed with An Garda Siochana

